
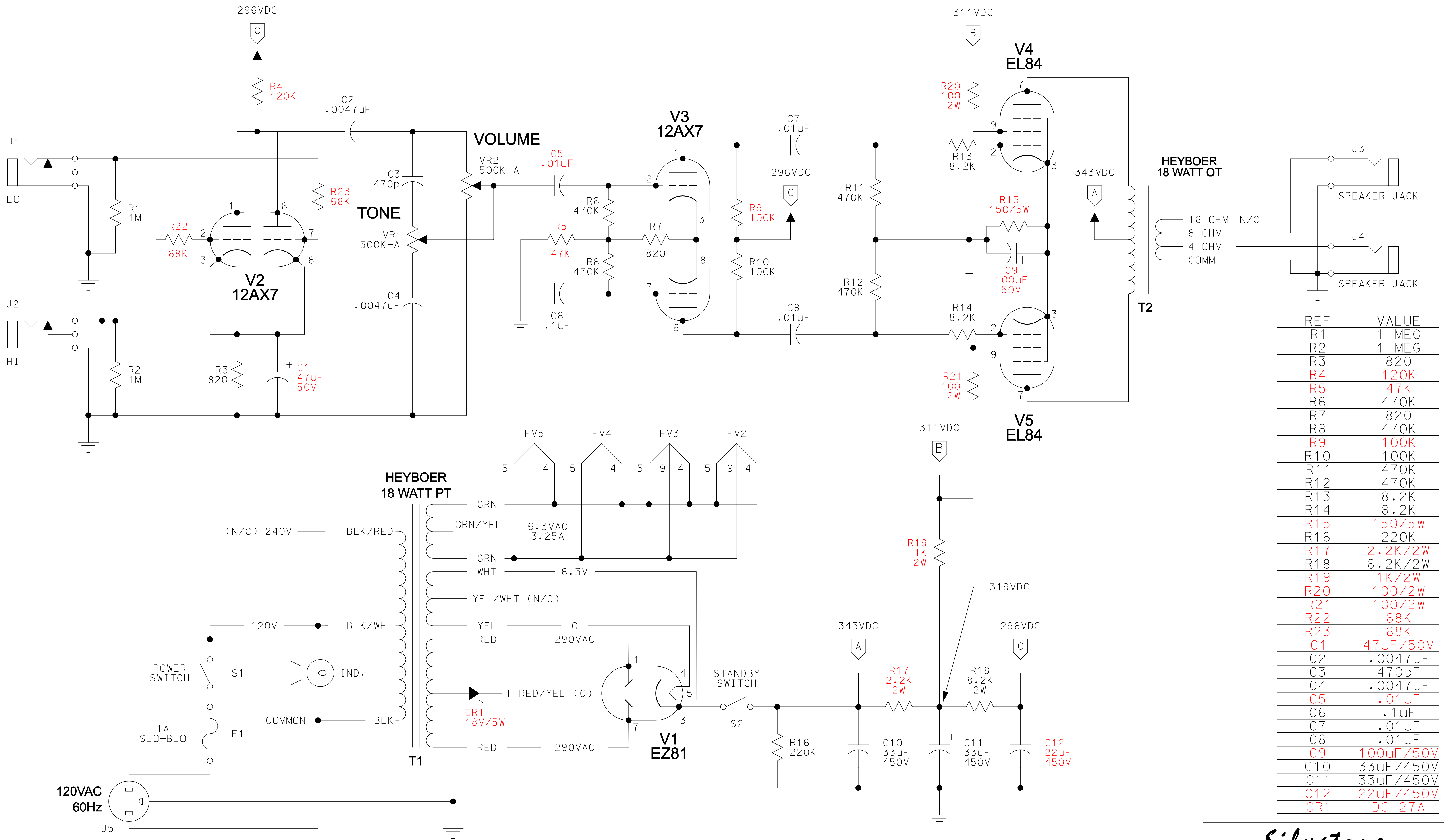


ALL RESISTORS 1/2W MINIMUM UNLESS OTHERWISE NOTED.
ALL CAPACITORS 400V OR GREATER UNLESS OTHERWISE NOTED.



www.silvatone.bravepages.com

AMP		18 WATT LITE II	
TITLE			
SCHEMATIC			
DRAWING NO		SHEET	REV
		1 OF 1	1
DATE: 8/26/04			



REF	VALUE
R1	1 MEG
R2	1 MEG
R3	820
R4	120K
R5	47K
R6	470K
R7	820
R8	470K
R9	100K
R10	100K
R11	470K
R12	470K
R13	8.2K
R14	8.2K
R15	150/5W
R16	220K
R17	2.2K/2W
R18	8.2K/2W
R19	1K/2W
R20	100/2W
R21	100/2W
R22	68K
R23	68K
C1	47uF/50V
C2	.0047uF
C3	470pF
C4	.0047uF
C5	.01uF
C6	.1uF
C7	.01uF
C8	.01uF
C9	100uF/50V
C10	33uF/450V
C11	33uF/450V
C12	22uF/450V
CR1	DO-27A

ITEM	TUBE	PIN 1	PIN 2	PIN 3	PIN 4	PIN 5	PIN 6	PIN 7	PIN 8	PIN 9
V1	EZ81	300AC		343				300AC		
V2	12AX7	133	0.00	1.11			133	0.00	1.11	
V3	12AX7	216	53	73			217	52	73	
V4	EL84			10.34				330		310
V5	EL84			10.34				330		310

NOTES:
1. ALL RESISTORS 1/2W MINIMUM UNLESS OTHERWISE NOTED.
2. ALL CAPACITORS 400V OR GREATER UNLESS OTHERWISE NOTED.
3. COMPONENTS IN RED HAVE BEEN CHANGED OR ADDED FROM THE ORIGINAL LITE II SCHEMATIC (M. HUSS).



www.silvatone.bravepages.com

AMP

18 WATT LITE II

TITLE

SCHEMATIC

DRAWING NO

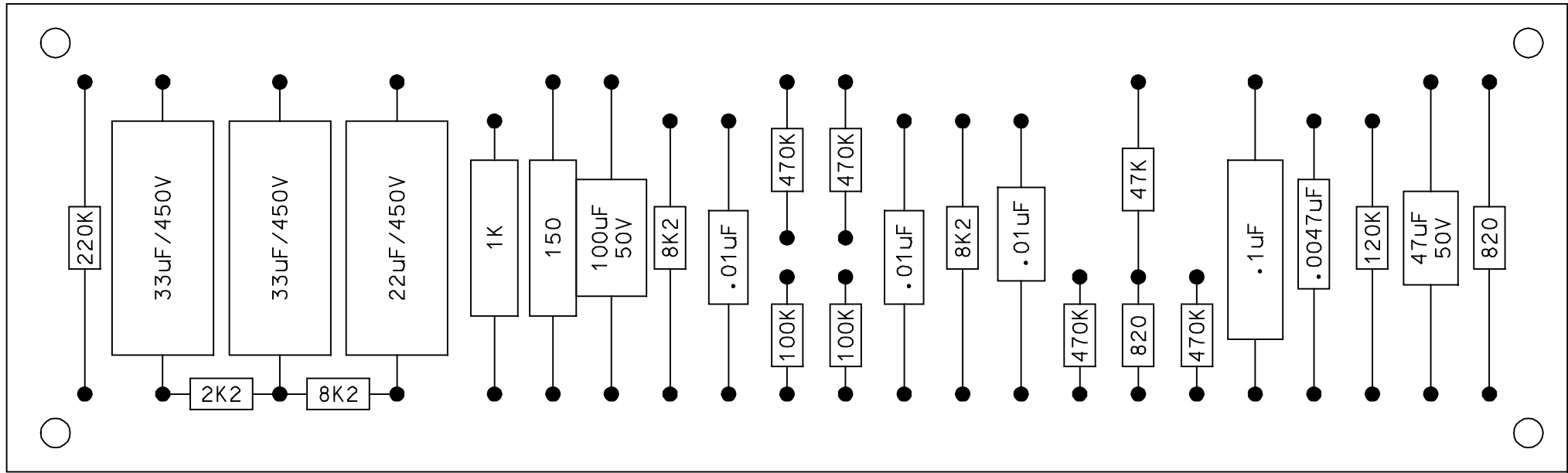
SHEET 1 OF 1

REV 2

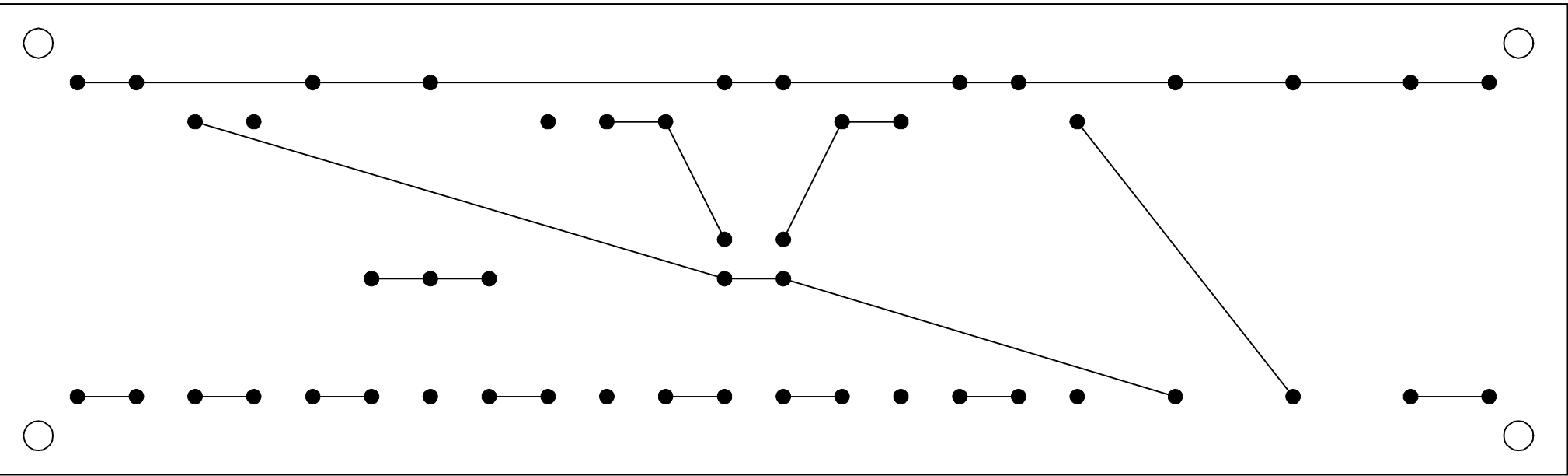
DATE: 11/8/04

18 Watt Lite II Parts List

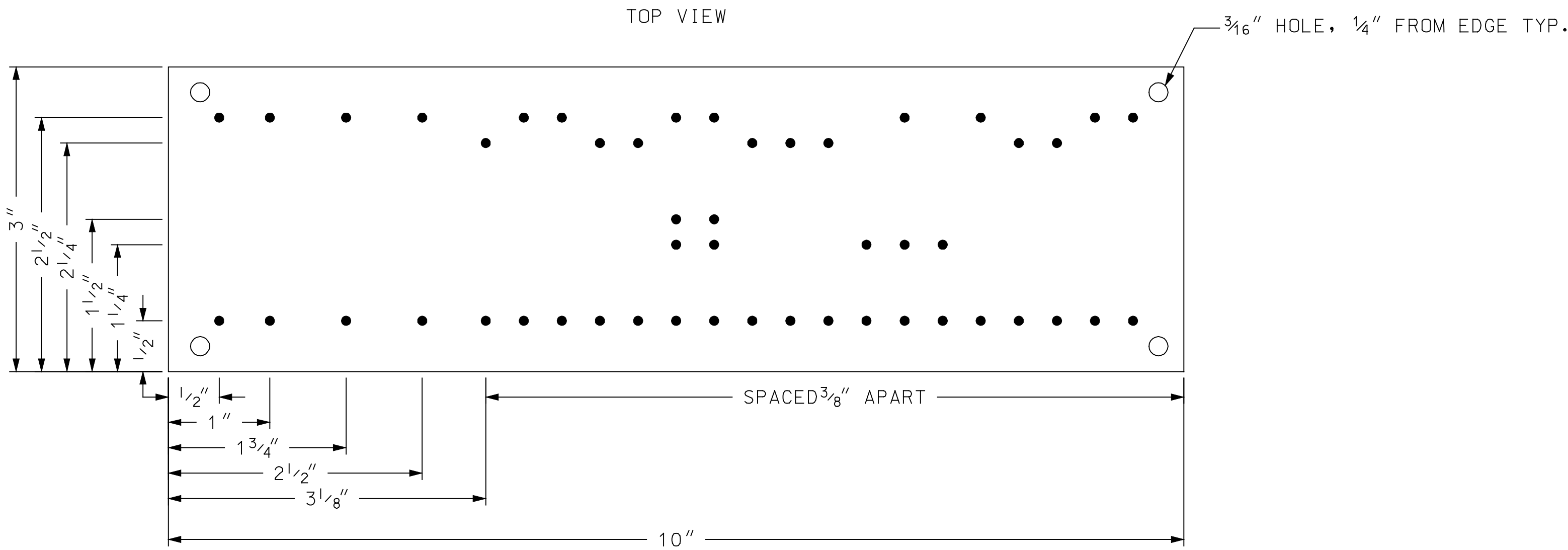
Part Type	Quantity	Reference	Part	Supplier	Part #
Capacitors	2	C2,C4	.0047uF	AES	C-MD0047-630
	1	C6	.1uF	AES	C-MD1-630
	3	C5,C7,C8	.01uF	AES	C-MD01-630
	1	C12	22uF	Mouser	140-XAL450V22
	2	C10,C11	33uF	Mouser	140-XAL450V33
	1	C1	47uF/50V	Mouser	140-XAL50V47
	1	C9	100uF/50V	Mouser	140-XAL50V100
	1	C3	470pF	Mouser	5982-15-500V470
Resistors	1	R15	150 / 5W	Mouser	286-130
	1	R19	1k/ 2W	Mouser	BC1KW-2CT-ND
	2	R3,R7	820 / 2W	Digikey	BC820W-2CT-ND
	1	R17	2.2k / 2W	Digikey	BC2.2KW-2CT-ND
	3	R13,R14,R18	8.2k / 2W	Digikey	BC8.2KW-2CT-ND
	1	R5	47k / 2W	Digikey	BC47KW-2CT-ND
	1	R4	120k / 2W	Digikey	BC120K-2CT-ND
	2	R9,R10	100k / 2W	Digikey	BC100KW-2CT-ND
	1	R16	220k / 2W	Digikey	BC220KW-2CT-ND
	4	R6,R8,R11,R12	470k / 2W	Digikey	BC470KW-2CT-ND
	2	R20,R21	100 / 2W	Digikey	BC100W-2CT-ND
	2	R22,R23	68k/ 2W	Digikey	BC68/kW-2CT-ND
	2	R1,R2	1M / 2W	Digikey	BC1.0MW-2CT-ND
Potentiometers	2	VR1,VR2	500K - A Log	Mouser	31VJ505
Switches	2	S1,S2	SW DPDT (Power & Standby)	Mouser	633-S6A
Transformers	1	T1,T2	18 Watt Set	GDS Amps	
Tubes	2	V2,V3	12AX7	Triode	12AX7tesla
	1	V4,V5	EL 84	Triode	EL84 MATCHED PAIR
	1	V1	EZ81	AES	6ca4ez81
	3		Retainer	Triode	9-wire-ret
	3		9 PIN CERAMIC SOCKETS	Triode	9pingoldchassis
	2		9 PIN CERAMIC SOCKETS W/Shield	Triode	9pincershld
Misc	1	CR1	ZENER DIODE 18V/5W (DO-27A)	Mouser	526-NTE5133A
	2	J1,J2	INPUT JACK (shorting)	Mouser	502-L-12A
	2	J3,J4	SPEAKER JACK (nonshorting)	Mouser	502-L-11
	1	J5	POWER CONNECTOR	Mouser	161-0707-1
	1		POWER CORD	Mouser	173-63102
	1	F1	3AG FUSE HOLDER	Mouser	5767-345321
	1		3AG FUSE 1A SLO BLO	Mouser	5760-13001
	1		INDICATOR	Mouser	607-6010M1
	2		KNOBS (chicken head)	Hoffman	
	1		20 x 6 x 2.5 CHASSIS	KomboKing	
	1		FACEPLATE (blk plexi)	Custom Amp Faceplates	
	1		BACKPLATE (silver Alumamark)	Custom Amp Faceplates	
	49		Turrets 1/8" Board	Ruby Amps	Turrets
	1		G10/FR4 GAROLITE (black, 10" x 3")	McMaster	85345K612
	4		SHOULDER WASHER, .385	Mouser	534-3069
	2		FLAT WASHER	Mouser	534-3222
	2		3/8" GROMMETS	Mouser	534-745



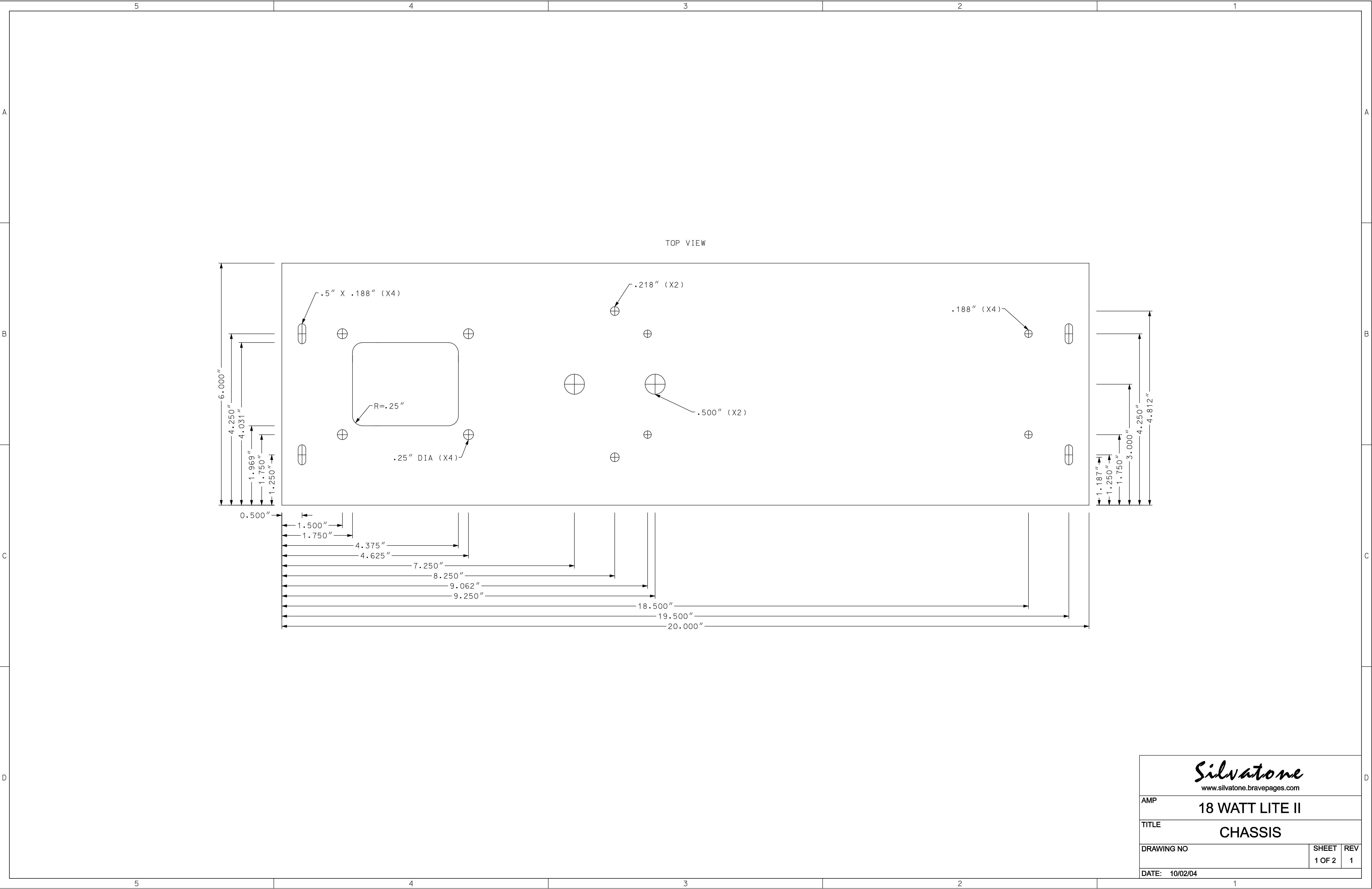
TOP VIEW



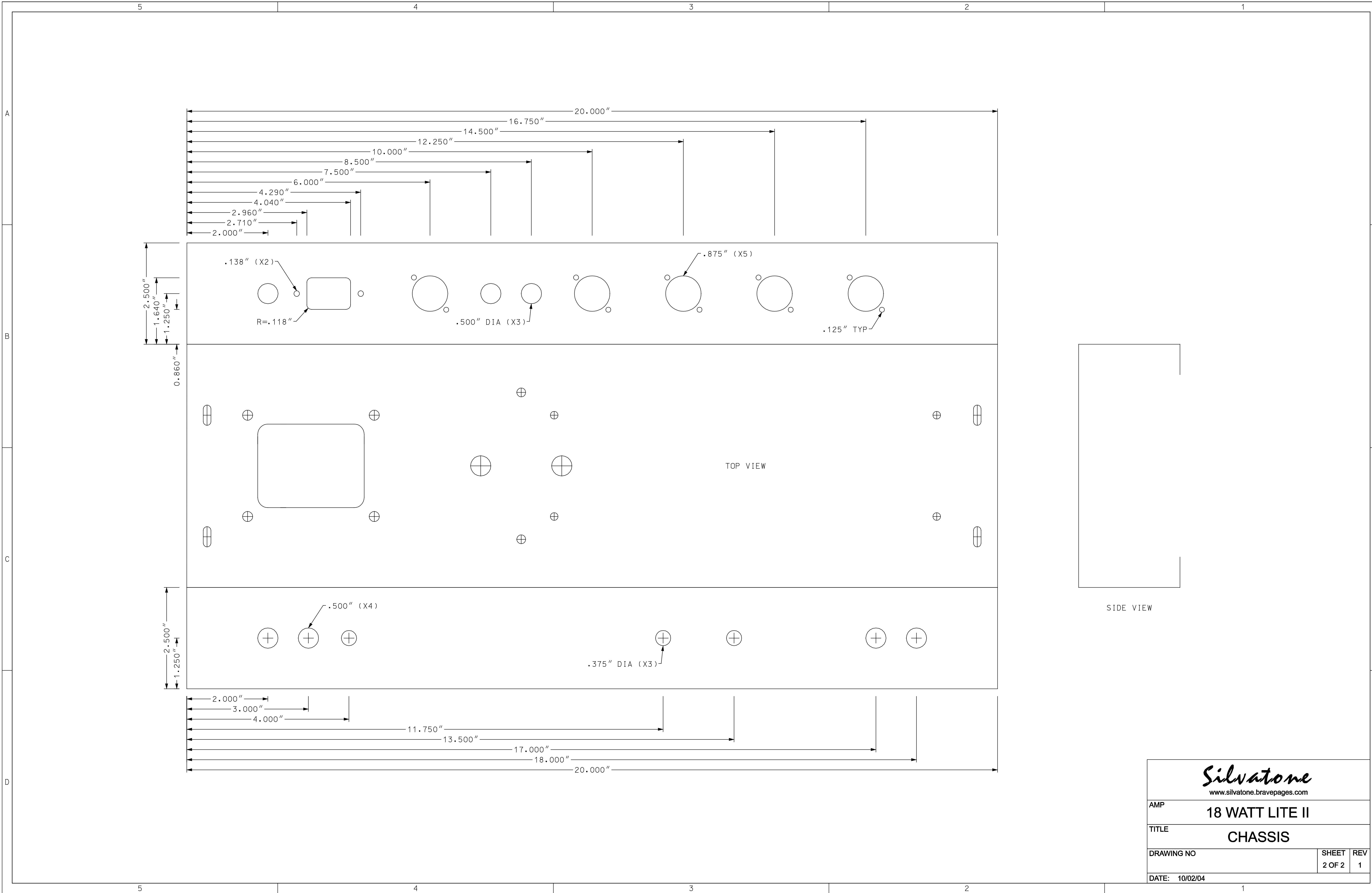
BOTTOM VIEW



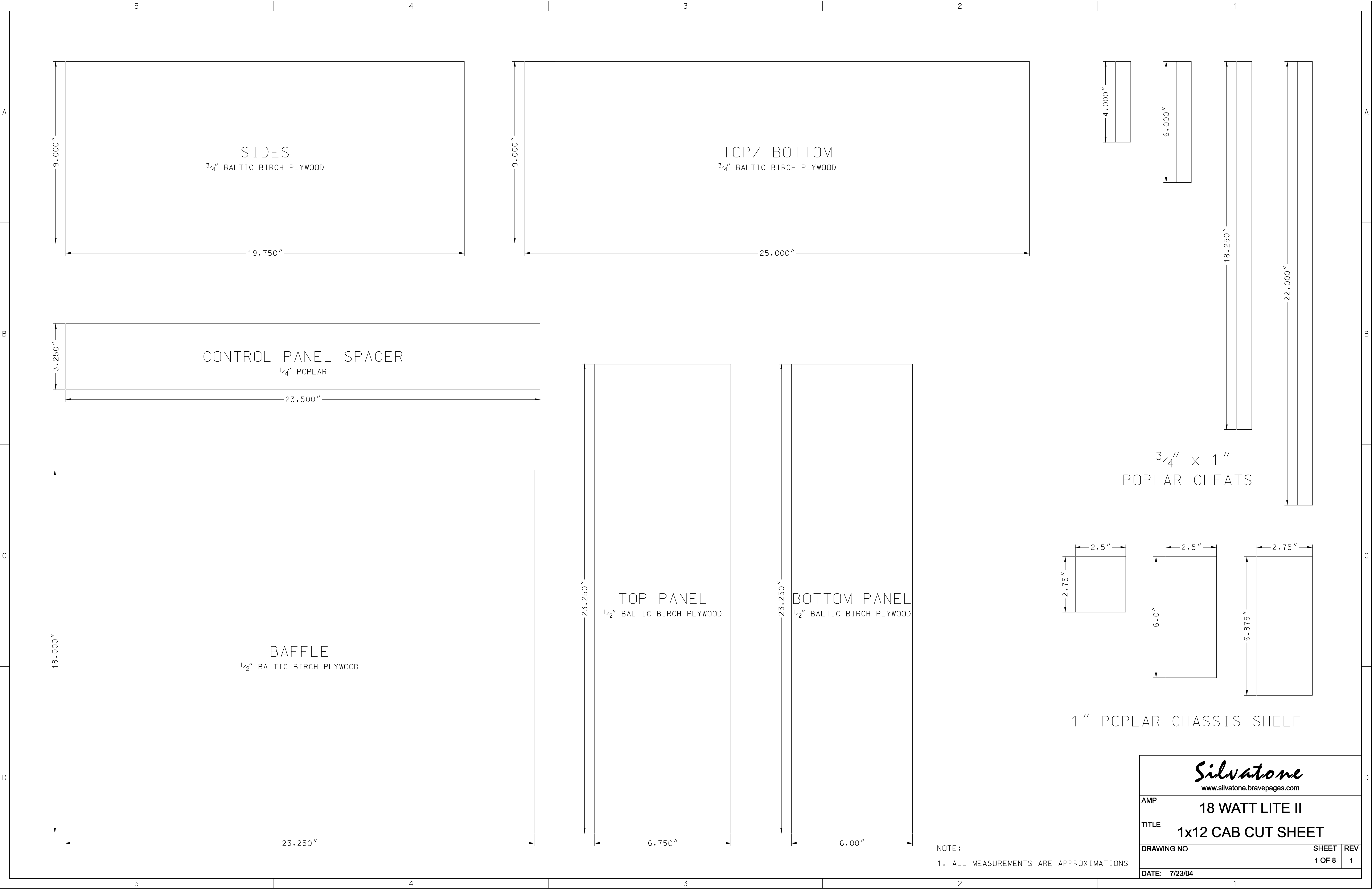
<div>Silvatone</div> <div>www.silvatone.bravepages.com</div>		
AMP		18 WATT LITE II
TITLE		TURRET BOARD
DRAWING NO	SHEET 1 OF 1	REV 2
DATE: 11/08/04		



<div>Silvatone</div> <div>www.silvatone.bravepages.com</div>			
AMP		18 WATT LITE II	
TITLE		CHASSIS	
DRAWING NO		SHEET	REV
DATE: 10/02/04		1 OF 2	1

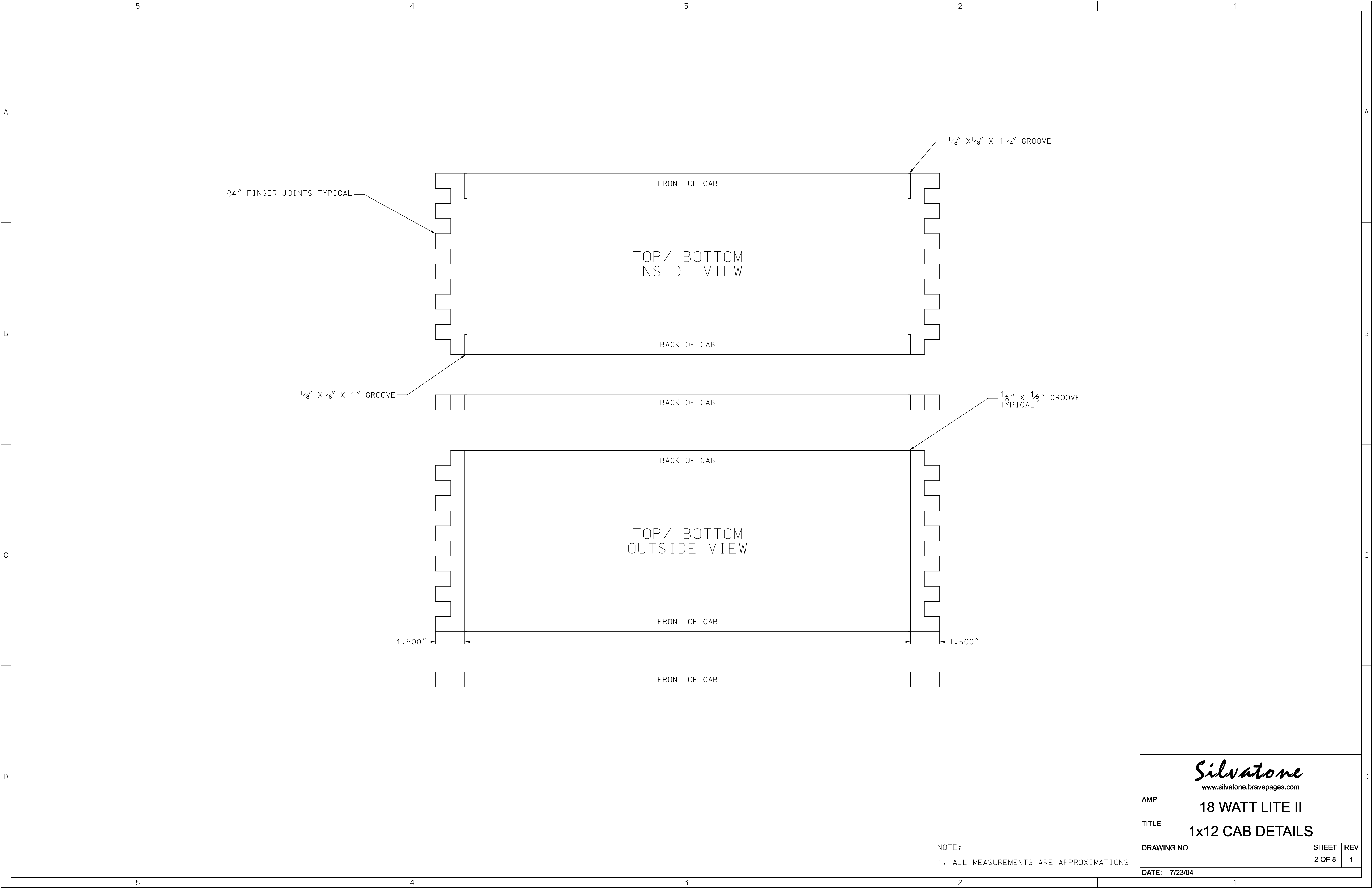


<div>Silvatone</div> <div>www.silvatone.bravepages.com</div>			
AMP		18 WATT LITE II	
TITLE		CHASSIS	
DRAWING NO		SHEET	REV
DATE: 10/02/04		2 OF 2	1

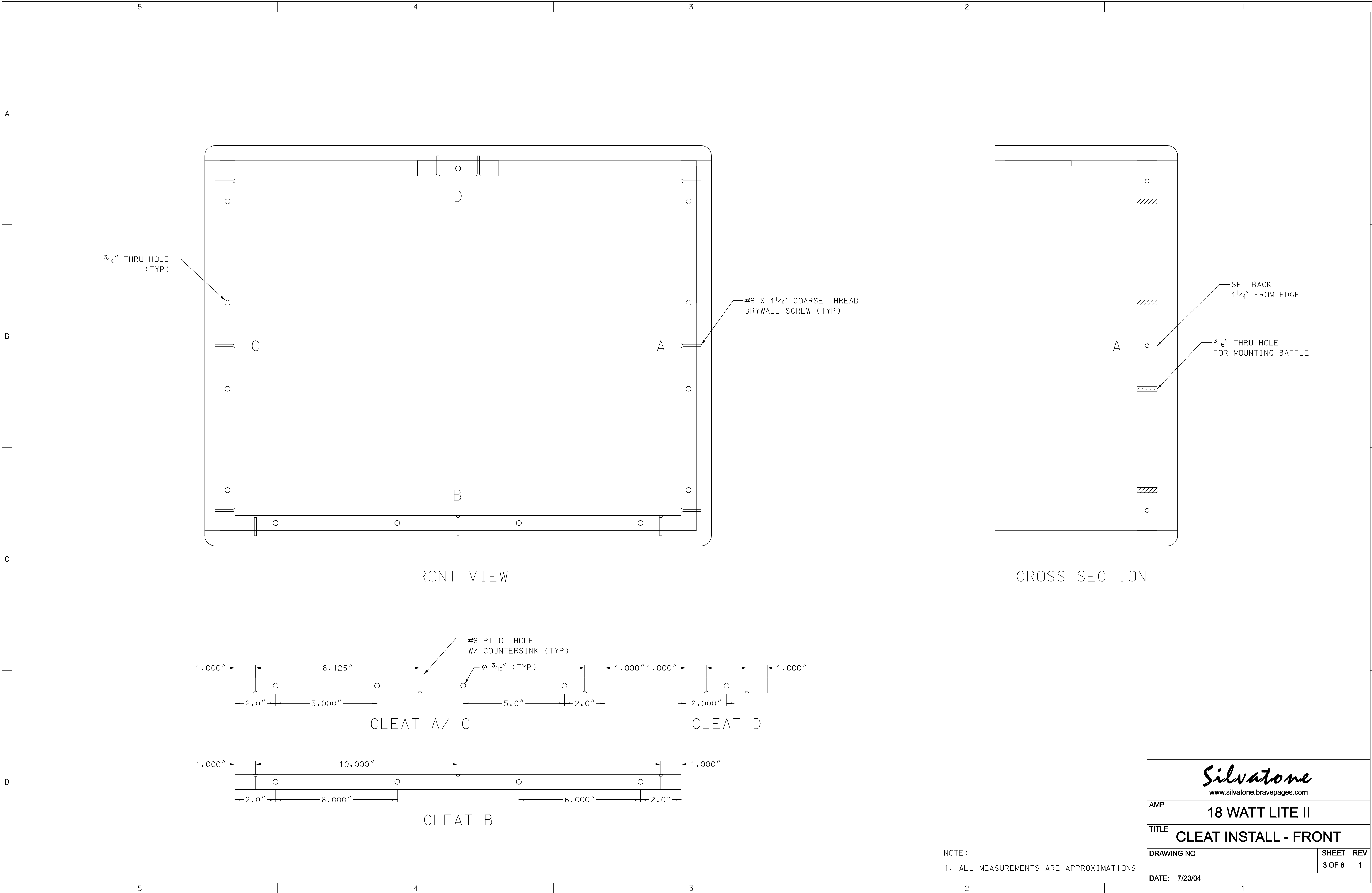


NOTE:
1. ALL MEASUREMENTS ARE APPROXIMATIONS

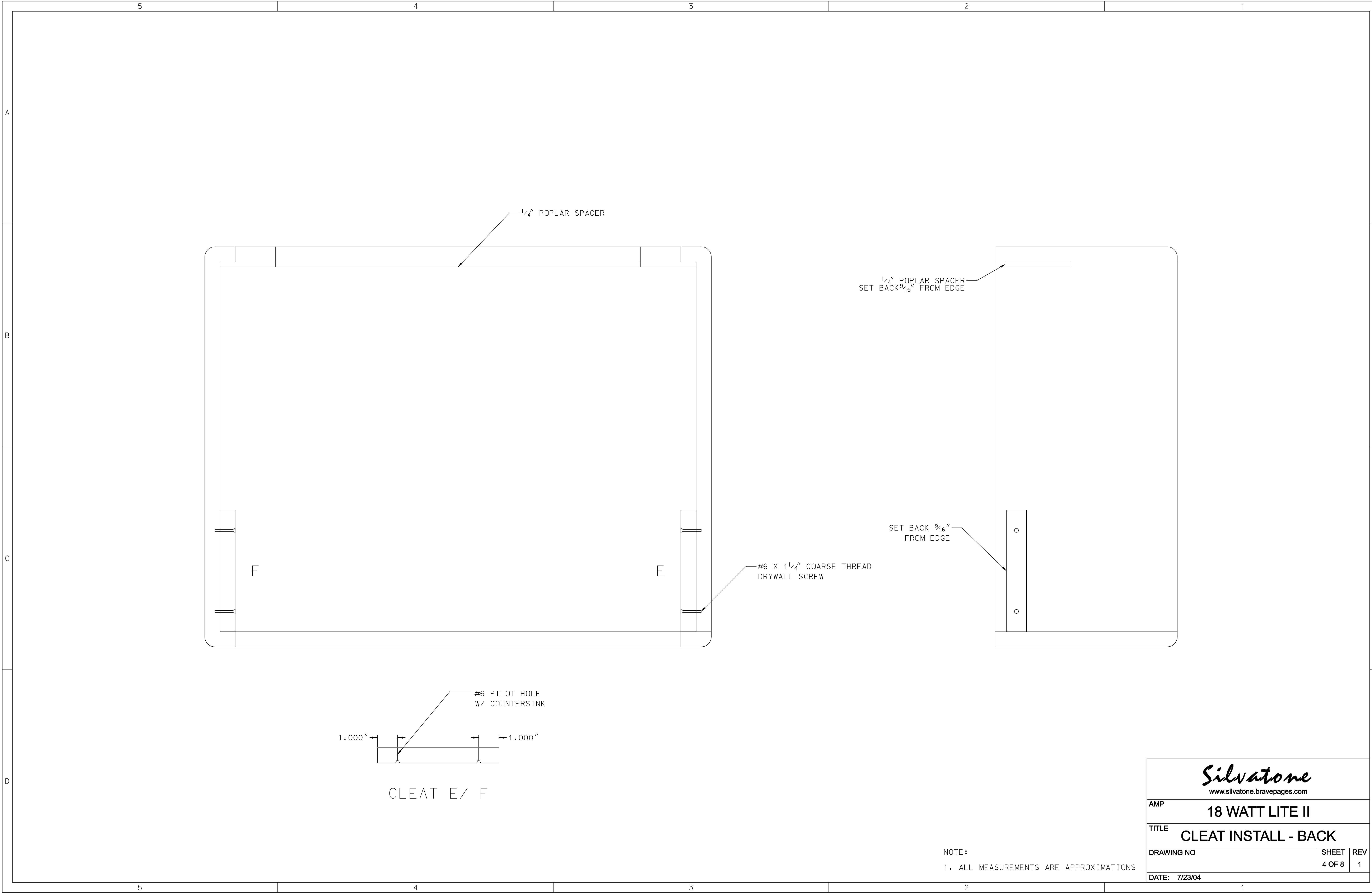
Silvatone www.silvatone.bravepages.com		
AMP 18 WATT LITE II		
TITLE 1x12 CAB CUT SHEET		
DRAWING NO	SHEET 1 OF 8	REV 1
DATE: 7/23/04		



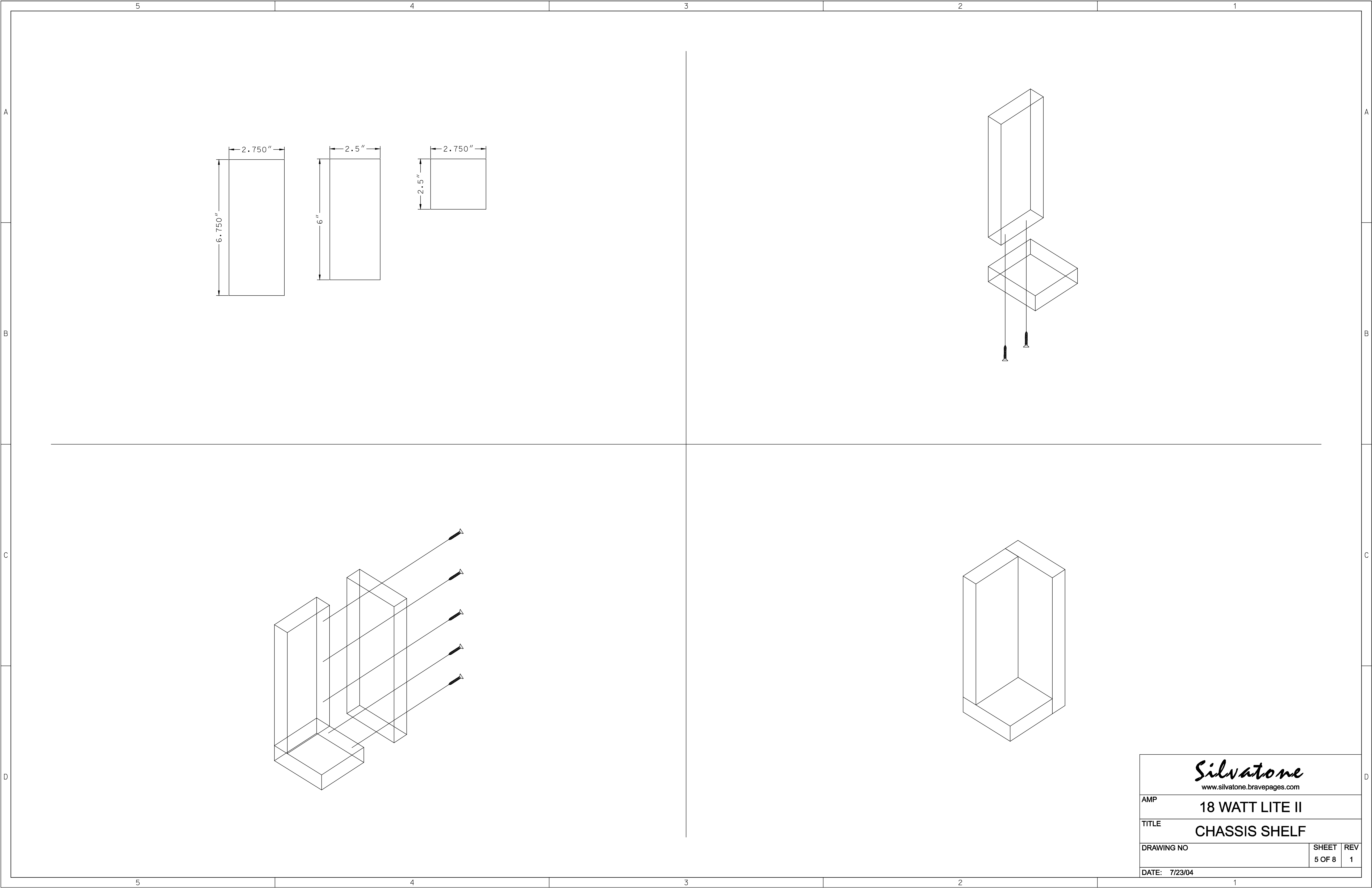
<div>Silvatone</div> <div>www.silvatone.bravepages.com</div>		
AMP	18 WATT LITE II	
TITLE	1x12 CAB DETAILS	
DRAWING NO	SHEET 2 OF 8	REV 1
DATE: 7/23/04		



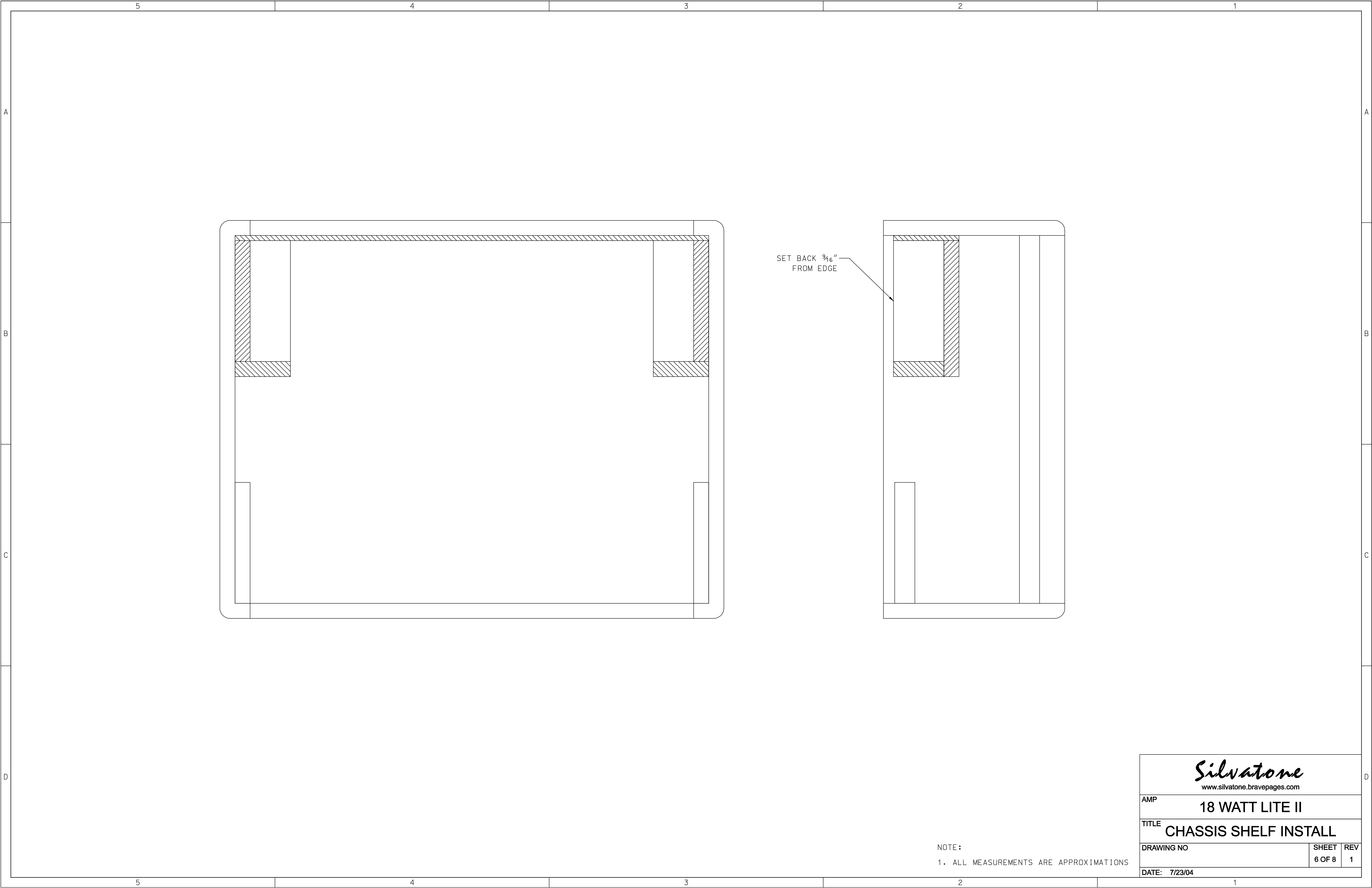
Silvatone www.silvatone.bravepages.com		
AMP 18 WATT LITE II		
TITLE CLEAT INSTALL - FRONT		
DRAWING NO	SHEET 3 OF 8	REV 1
DATE: 7/23/04		



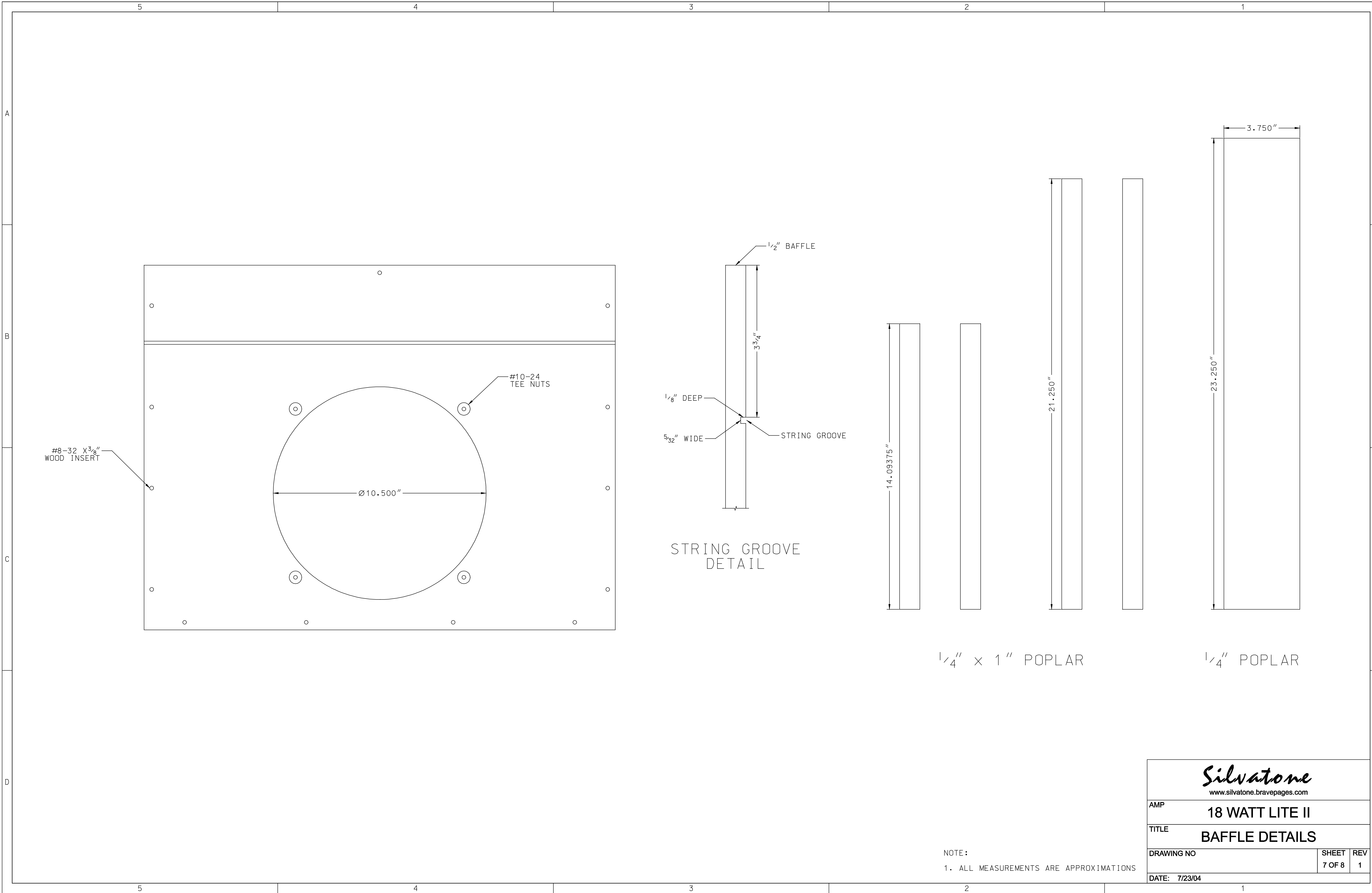
Silvato www.silvato.bravepages.com		
AMP	18 WATT LITE II	
TITLE	CLEAT INSTALL - BACK	
DRAWING NO	SHEET 4 OF 8	REV 1
DATE: 7/23/04		



<div>Silvatone www.silvatone.bravepages.com</div>			
AMP		18 WATT LITE II	
TITLE		CHASSIS SHELF	
DRAWING NO			SHEET
DATE: 7/23/04			5 OF 8
			REV
			1



<div>Silvatone</div> <div>www.silvatone.bravepages.com</div>		
AMP 18 WATT LITE II		
TITLE CHASSIS SHELF INSTALL		
DRAWING NO	SHEET 6 OF 8	REV 1
DATE: 7/23/04		



NOTE:
1. ALL MEASUREMENTS ARE APPROXIMATIONS

Silvatone www.silvatone.bravepages.com		
AMP 18 WATT LITE II		
TITLE BAFLE DETAILS		
DRAWING NO	SHEET 7 OF 8	REV 1
DATE: 7/23/04		

